

# 2.6m Antenna

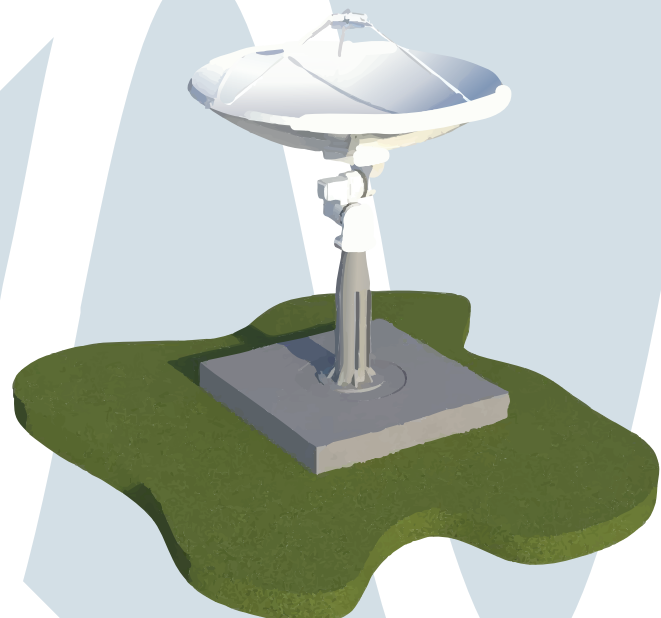


Milexia offers Space Comm Systems in house designed and manufactured 2.6m antenna. This 2.6m antenna offers high performance and a high reliability X/Y terrestrial mount system engineered for pointing accuracy and broad capability. It can use a single feed or combination of Cassegrain and Prime focus feeds that can be combined with a frequency selective sub-reflector for use as a single, dual and triband antenna for ground to space communications.

The modular design, carbon fibre reflector, struts and subreflector mounting (if needed) allows us to leverage multiple feeds and supporting RF equipment to tailor systems for customer requirements minimising customer specific development costs.

## Key Features:

- **Modular Design:** Modular mounting, interfaces and software allow integration of our full range of feeds and customer requested equipment with minimal integration activities.
- **Robust Construction:** Durable carbon fibre reflector and mounts, powerful dual axis cycloidal gearbox capable of withstanding harsh environments.
- **OpenAPI Software:** Control software designed for full standalone operation and integration into larger networks.
- **Component Integration:** Software packages are activated based on connected equipment and processes.
- **Optimized Optics:** Reflector Optics are micro-shaped for the best Prime and Cassegrain feed performance.
- **Surface Accuracy:** Carbon fibre reflector lay up to suit RF frequency requirements, with Surface Deviation RMS achieved  $<0.25\text{mm}$ .
- **Precise positioning:** 26 Bit Absolute encoders ( $0.000005^\circ$ ) on each axis output, with supporting Closed Loop Power Tracking for maximum performance.



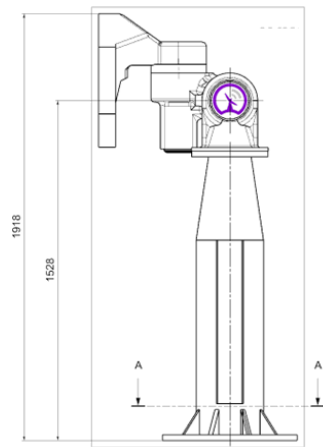
✉ [sales-uk@milexia.com](mailto:sales-uk@milexia.com)

🌐 [milexia.com](http://milexia.com)

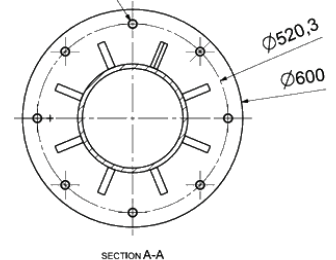
☎ +44 (0)1256 812222

## Technical Specifications

Parameter	Specification
<b>Diameter</b>	2.6m
<b>Reflector Construction</b>	3 Petal -High-modulus carbon fibre composites
<b>Surface Accuracy</b>	0.5-<0.25mm RMS (Frequency dependant)
<b>Frequency Compatibility</b>	L, S, C, X, Ku, Ka, Q and V Bands
<b>Pointing Accuracy</b>	<0.05°, Power track,
<b>Encoder Resolution</b>	26 Bit, (0.000005°)
<b>Gearbox Type</b>	Precision Cycloidal Zero Backlash Final Drive Gearbox
<b>Axis Speed</b>	12 °/s both axes simultaneously
<b>Mounting</b>	Anchor bolt see bolt size and PCD image right
<b>Weight</b>	≈ 350 kg



8 X M20 - Ø 22 THRU



## Environmental Specifications

Parameter	Specification
<b>Operational Wind Load (mph/kph)</b>	60 mph / 97kph
<b>Survival Wind Load (mph/kph)</b>	125 mph / 210 kph
<b>Rain</b>	Above 100mm/hr
<b>Snow Load</b>	60cm/hr up to 3m
<b>Ice</b>	12.7mm (1/2") on all surfaces
<b>Hail</b>	<15mm Diameter at <25m/s at <20° incline
<b>Solar Load</b>	1,120 W/m <sup>2</sup>
<b>Relative Humidity</b>	100% Condensing
<b>Shock Loads</b>	Transport loads, Truck loading and unloading, air and sea freight and seismic loads
<b>Temperature</b>	Cold C2 - Hot Dry A1
<b>Operational</b>	-46°C (-50°F) to + 49°C (120°F)
<b>Survival °C(°F)</b>	-50°C (-60°F) to +71°C (160°F)
<b>Optional Hot</b>	-20°C (-4°F) to+ +55°C (131°F)
<b>Optional Cold</b>	-50°C (-58°F) to +40°C (86°F)

✉ sales-uk@milexia.com

www milexia.com

☎ +44 (0)1256 812222