

Scorpion-HP high power Manpack

HP series 1.0M and 1.3M



- Up to 1.3M reflector options
- X, Ku and Ka-Band
- Compact and weatherproof (complete system)
- Up to 100W terminal power
- No-tools assembly
- Single soft-case unit (under 19kg)
- Fine adjustments on all axis

The full system includes:

- 2 cases for antenna/reflector
- 2 case 25M L-Band
- 1 case Ethernet
- 1 case 25M mains power

The Scorpion-HP Manpack is designed as a cross over of the Manpack and a traditional fly-away system.

The Scorpion-HP is a cross over from manpack to a traditional fly-away system. The captive RF transceiver can be supplied in X, Ku or Ka-Band with reflector sizes from 1.0m to 1.3M.

All the frequency and power size options can be packed away in two IATA carry cases, with all the equipment required to uplink including: the pointing aid, cables and power supply.

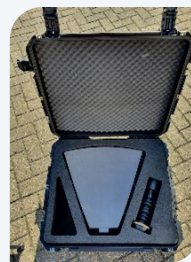
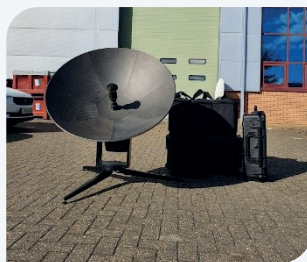
The latest in manufacturing methods and material selection has allowed the Scorpion-HP to provide the ultimate in cross-over terminals giving a truly powerful performance.

- X-Band - 100W
- Ku-Band - 80W
- Ka-Band - 50W

The elevation pod is completely captive and houses all the RF components which have been specified to operate in extreme weather conditions. The entire unit is IP65 rated, all the RF connections and control are completely sealed so no dangling wires or connections to be made.

We have included our traditional terrain compensating oil filled inclinometer that will give accurate and true indication of the elevation of the satellite.

The base unit contains the tripod legs and fine adjustment for better peaking and raise the base of the unit off the ground, mitigating the ground effect heating and allows the Scorpion-HP to be used in wet and muddy conditions.



Scorpion-HP high power Manpack

HP series 1.0M and 1.3M

TECHNICAL INFORMATION

X Band

TX Frequency	7.9-8.4GHz
RX Frequency	7.25-7.75GHz
Gain TX	37.0 dBi
Gain RX	36.4 dBi
Pol 2 port	Circular
Axial Ratio	<0.75 dB
Isolation	>23 dB
TX/RX Port	VSWR 1 <1.25:1
BUC power	up to 100W

KU Band

TX Frequency	13.75-14.5GHz
RX Frequency	10.7-12.75GHz
Gain TX	41.4 dBi
Gain RX	40.1 dBi
Pol 2 port	linear
Port to port isolation	>35 dB
Cross pol	30 dB min
TX/RX Port VSWR	<1.5:1
BUC Power	up to 50W

Ka Band

TX Frequency	9.0-31.0GHz
RX Frequency	19.2-21.2GHz
Gain TX	47.6 dBi
Gain RX	44.5 dBi
Pol 2 port	Circular
Axial Ratio	<0.75 dB
Isolation	>55 dB
TX/RX Port VSWR	Tx<1.25:1 RX<1.5:1
BUC Power	50W

Antenna type	1.0m
Azimuth range (Course/Fine)	+/- 360°
Elevation range (Course)	0° to 90°
Elevation range (Fine)	+/- 20°
Operating temp	-30°C to +60°C
Operating humidity	95% RH
Operational wind speed	60km/hour (with ballast)
Storage Temperature	40°C to +60°C
IP Interface	Weatherproof RJ45
Tx/RX	N-Type
Power	240VAC
Packing options	Soft pack or hard case
Case 1: Reflector Case	667 x 597 x 216mm - 14kg
Case 2: Main Body Case	815 x 423 x 403mm - 32kg

SYSTEM COMPONENTS

